

F SERIES TECHNICAL SPECIFICATIONS

The standard open cab model with (ROPS)

The nominal width of the standard F Series without a cab is 1.5 m, making it ideal for orchard farming. The height of the open cab model with the rollover protective structure (ROPS) folded down is just 1.4 metres, making it perfectly suited for covered and pergola farming techniques.

The standard model with closed cab

The nominal width of the standard F Series with an enclosed cab is 1.5 m, making it ideal for orchard farming. Standard equipment includes a heated and air-conditioned cab. The height of the tractor remains under 2.5 m, even with the largest tyres. Despite its compact dimensions, the driving position and ergonomics are excellent.

The narrow cab model

The nominal width of the narrow cab model is just 1.3 metres (starting from 1278 mm), making it ideal for vineyards. The narrow model comes with a heated and air-conditioned enclosed cab.



Weight kg: Widths:

Standard open:	max. 3120	1544-1944
Standard cab:	max. 3485	1544-1944
Narrow cab:	max. 3375	1278-1785

MODEL STAGE V	ENGINE	OUTPUT MAX			1.3 M NARROW CAB	1.5 M STD. CAB OR ROPS	TRANSMISSION OPTIONS		
		hp	kW	Nm			MECHANICAL SHUTTLE		POWER SHUTTLE
F75	FPT –	75	55	350	Opt.	Opt.	BASIC	WITH SPLITTER	WITH 2 PS
F95	F28 EU Stage V	90	67	370	Opt.	Opt.	12+12R	24+24R	24+12R
F105		101	75	415	Opt.	Opt.	12+12R	24+24R	24+12R

DIMENSIONS, MODEL	STD	NARROW
Length, mm	3980	3980
Height, cab model (rear wheels 380/70R28), mm	2478	2478
Width, mm	1544 to 1944	1278 to 1785
Weight, cab model, kg	3050	2940
Wheelbase, mm	2154	2178

TECHNICAL DATA, HYDRAULICS (BOTH STD AND NARROW MODELS)	2 PUMPS	3 PUMPS
Oil flow max l/min	60 + 27	60 + 27 + 27
Availability of service valves	2 or 3	2, 3 or 4
Optional front quick couplers	2 pairs	2 or 3 pairs
Power lift capacity, tons		2,6 or 3
Optional Front Lift, capacity tons		1,8

TECHNICAL DATA, PTO (BOTH STD AND NARROW MODELS)	540/1000	540/540E
Independent PTO with mechanical clutch (Synchro shuttle models)	X	X
Independent PTO with hydraulic clutch (power shuttle models)	X	X
Ground Speed PTO	Option	Option
Front PTO (1000 r/min, only with Front Lift)	Option	Option

VALTRA F SERIES



The Valtra F Series is the perfect choice for specialist jobs such as fruit farms and vineyards. It's between 1.3 and 1.8 m wide, making it ideal for the narrow passages between your most valuable fruit crops. The specially shaped chassis combined with a front axle enable a 55-degree wheel angle. Tight turns are possible with a 3.6 m radius. The Valtra F Series is a compact machine and its powerful hydraulics allow the use of equally effective implements to make the F Series your working machine for specialist use.



is a worldwide brand of AGCO.

Valtra Inc.
Valmetinkatu 2
FI-44200 Suolahti
Tel. +358 (0)2045 501

www.valtra.com
showroom.valtra.com
www.youtube.com/valtravideos
www.facebook.com/ValtraGlobal

The tractors that appear in this brochure may be equipped with special options. Changes possible - all rights reserved.



F SERIES

The specialist machine for specialist jobs



YOUR WORKING MACHINE

LET A SPECIALIST HANDLE YOUR MOST VALUABLE CROP

The Valtra F Series is a tiny yet powerful tractor that takes great care of your most precious yield. The F Series is available in three different dimensions which makes it suitable for the whole variety of tasks in vineyards, fruit farms, and other specialised cultivation. Choose a tractor with or without a cab or go for the narrow model to fit through tighter spaces.

You can pick from a range of renowned Valtra comfort features, such as air-conditioned cabs and pneumatic seats, to make your working days more comfortable. The F Series is equipped with powerful hydraulics, so you can use the correct implements. Valtra Powershift transmission ensures ease of use and doubles the number of operating speeds.



THE F SERIES HAS IT ALL IN A COMPACT SIZE

SIZES TO FIT YOUR JOB

The Valtra F Series comes in three main versions. You can choose a tractor with or without a cab (1.5 - 1.8 m width) or go for the narrow model (1.3 - 1.5 m width) to fit through tighter spaces. Without the cab and with rollover protective structure (ROPS) the machine is as low as 1.4 m. It is a compact model perfect for the tightest of spaces. To get a perfect fit, a good selection of 24" and 28" rear wheels are available, with corresponding 16" to 20" front wheels.

CABS THAT SUPPORT YOUR EFFICIENCY

The cabs are perfectly suited for specialist crop operations. They are easy to access and comfortably ergonomic with air-con, great visibility and controls on the right-hand side. Pneumatic and mechanically suspended seat options are also available. Although compact in size, the cabs still offer comfort and operating room for long and efficient workdays.

A NIMBLE MACHINE

The specially shaped chassis combined with a front axle enable a 55-degree wheel angle. Tight turns are possible with a 3.6 m radius.

CAB

Cabs for special crop operations. Two widths of air conditioned cabs; ROPS version also available.

USER INTERFACE

User friendly operator environment. Made to fit the compact size. Supports effective way of working.

TRANSMISSION OPTIONS

Speed up your work. Power shift and power shuttle options available.

ENGINE

Very effective but compact 2.8 litre common rail engine. Electronic control with two RPM memories.

POWERFUL HYDRAULICS

Powerful hydraulics for demanding implements. Up to three pumps and 97 l/min for implement use.

FOUR-WHEEL DRIVE AND DIFFERENTIAL LOCK

4WD and diff lock are both easy to operate with a rocker switch.

TYRE OFFERING

Extended to fit specialist needs - consult your dealer for details.

STANDARD OPEN OPERATING STATION MODEL WITH ROPS



STANDARD MODEL WITH A CAB



NARROW MODEL WITH A CAB

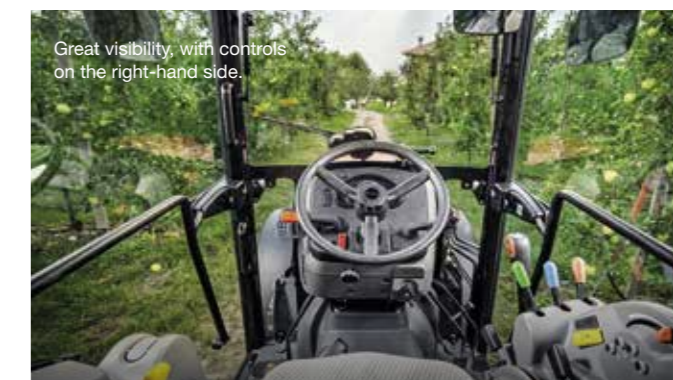


HYDRAULICS TO SERVE DEMANDING IMPLEMENTS

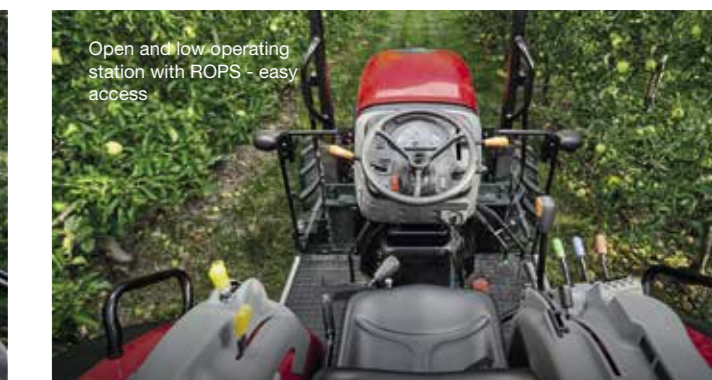
Demanding implements ask for powerful hydraulics. Valtra F Series can be equipped with two or three hydraulic pumps and up to four implement valves. Flow control and mid-mounted quick couplers are available. The F Series has up to three tons power lift capacity.

TRANSMISSION TO MAKE OPERATING EASY

Special jobs require a large number of speeds. The cost effective mechanical 24 + 24R transmission with synchromesh shuttle offers the right speed for every task. If more comfort and efficiency is needed, the power shuttle 24 + 12R transmission with power shift gear is the right choice. It makes the tractor easy to operate in any work situation.



Great visibility, with controls on the right-hand side.



Open and low operating station with ROPS - easy access